

## Sts. Peter & Paul Catholic Parish

411 Pioneer Seneca KS 66538

Rev. Arul Carasala, Pastor

[www.saintspeterandpaul-seneca.com](http://www.saintspeterandpaul-seneca.com)

Email: [sppchurch@carsoncomm.com](mailto:sppchurch@carsoncomm.com)

Parish Office: 785-336-2128 Fax: 785-336-2307 Rectory: 785-336-2208

Email: [sppsecretary@gmail.com](mailto:sppsecretary@gmail.com)

Sts. Peter & Paul Catholic School 409 Elk Seneca KS 66538

Mr. Todd Leonard, Principal - Email: [tleonard@spps.school.com](mailto:tleonard@spps.school.com)

Office: 785-336-2727 Fax: 785-336-3817

Director of Religious Education Mrs. Shannon Holthaus

Email: [sppchurchccd@gmail.com](mailto:sppchurchccd@gmail.com) 785-294-1328

Baptisms: By appointment

Reconciliation: Saturday 2:30-3:30 PM or by appointment

Weddings: Six months advance notice

### Mass Schedule:

Weekday Mass: Tues. 6:00 PM, Wed. & Fri.: 8:00 AM, Thurs. 7:00 AM

Saturday: 7:30 AM; Saturday Vigil: 4:00 PM

Sunday: 7:00 AM, 9:00 AM, 11:00 AM

## January 17<sup>th</sup>, 2016

"The greater the sinner, the greater the right he has to My mercy". (Jesus words to St Faustina, from *Diary of Saint Maria Faustina Kowalska, 723*)

Flowers: The bouquet on the Main Altar this weekend is in honor of Dan Frehe on the anniversary of his death, with love from his family.

A funeral service was held at the Lauer Funeral Home on Friday, January 15<sup>th</sup> at 2:00 PM for Robert Wiegert, who died on January 13<sup>th</sup> in Seneca. Fr. Ron officiated. Burial was in Marysville cemetery. May he rest in peace.

Word was received from Fr. Arul that he arrived safely at his home in India at 3:00 PM on January 12<sup>th</sup> (our time). Fr. Arul's parting words, before he left here, were to his Sts. Peter & Paul Parish family in thanksgiving for the beautiful Christmas services we just had in our Parish. The decorations were beautiful, the music outstanding, everything was scheduled in good manner, everyone showed up for their ministries, and replacements were efficiently made. Father said all of this made his Christmas a joy, and he thanks you.

Thank you to all who helped make the Memory Tree so very special again this year. We collected \$1,546.00 for the school. Much appreciation goes to the Bob & Mary Jane Holthaus family for donating the beautiful tree and for all who helped set it up, decorate it, and care for it. Thanks also to Cynthia Haugsness for the calligraphy and Joe Kohake for all his help. - The SPPS PTO Memory Tree Committee.

## 2<sup>nd</sup> Sunday in Ordinary Time

The annual Call to Share appeal with the Archbishop starts this weekend. You will receive a letter from the Archbishop asking your support. Donations may be placed in the Sunday Collection or mailed to the parish office. Thank you for your support.

Friday, January 22<sup>nd</sup> marks the 42<sup>nd</sup> Anniversary of the Roe vs Wade decision. On this day, our Parish will honor the millions of babies aborted to this tragedy with a commemorative Mass at 8:00 AM. Please join in praying for the abolishment of this law, and for the innocent victims lost to this senseless tragedy.

Catholic Schools week will be celebrated Sunday, January 31<sup>st</sup> through Friday, February 5<sup>th</sup>. The distinguished graduate will be honored at 9:00 Mass on Sunday, January 31 to begin the week.

St Anne's Altar Society Annual Pancake Breakfast will be held on Sunday, January 31<sup>st</sup> in the Parish Hall from 7:00 AM to 1:00 PM. If you wish to donate, please call Ida Suther at 294-8012 (leave a message). The work list was enclosed in last week's Bulletin.

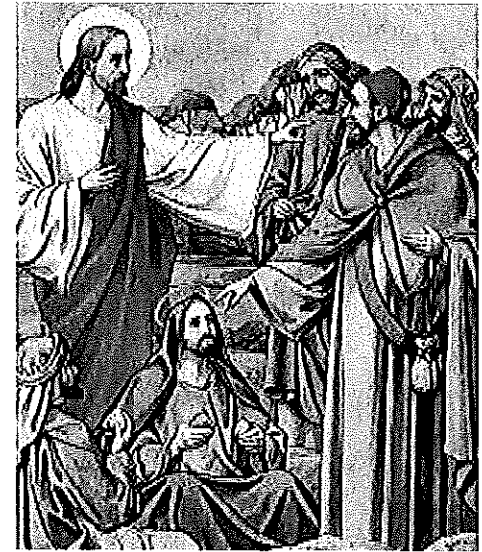
FYI: To anyone who donated a poinsettia in memory of a loved one for Christmas, please pick it up anytime. Thank you for your donation.

In honor of the Martin Luther King Holiday, Sts. Peter & Paul school and parish office will both be closed on Monday, January 18.



## Masses for Jan 18 to Jan 24

### 2<sup>nd</sup> Sunday in Ordinary Time



<b>Monday</b>	<b>Jan 18– 2nd Monday in Ordinary Time</b> 7:00 AM – Communion Service
<b>Tuesday</b>	<b>Jan 19 - 2nd Tuesday in Ordinary Time</b> 6:00 PM – L/D John & Ethel Rottinghaus Family
<b>Wednesday</b>	<b>Jan 20 – St Fabian &amp; St Sebastian</b> 8:00 AM – Don Sperfslage (Anniv) 9:30 AM – Crestview- Regis Heiman
<b>Thursday</b>	<b>Jan 21 – St Agnes</b> 7:00 AM –L/D Lillis & Arlene Haverkamp Family
<b>Friday</b>	<b>Jan 22 – Day of Prayer for the Legal Protection of Unborn Children</b> 8:00 AM –Jeremy Schottel (Anniv)
<b>Saturday</b>	<b>Jan 23 – St Vincent &amp; St Marianne Cope</b> 7:30 AM – Aurelia Heinen 4:00 PM – Bob Haverkamp (Anniv)
<b>Sunday</b>	<b>Jan 24 – 3rd Sunday in Ordinary Time</b> 7:00 AM - For our Parish 9:00 AM – L/D Joe & Emma Wichman Family 11:00 AM – Marcena Stallbaumer

**Weekday Servers**    **Tues 6 PM, Thurs 7 AM, Sat 7:30 AM -** Gavin Gudenkauf & Parker Wilhelm  
                                  **Wed 8 AM & Fri 8 AM –** SPPS Students

<u>Sat 4:00 PM</u>	<u>Sun 7:00 AM</u>	<u>9:00 AM</u>	<u>11AM</u>
Cole Hermes	Braden Bramhall	Sarah Haverkamp	John Strathman
Cassidy Rethman	Sydney Schmelzle	Hailey Wurtz	Jackson Holthaus
Jacob Hundley	Tyler Gerety	Will Bartkoski	Leo Holthaus
Taylor Hammes	Charlie Bontrager	Anna Bartkoski	Elliott Crabtree

#### Assistants at The Eucharist for Saturday, Jan 23 & Sunday, Jan 24

	<u>Lector/*Commentator</u>	<u>Communion</u>	<u>Cup</u>	<u>Cantor</u>	<u>Organist</u>
<u>4:00 PM</u>	Jean Wassenberg *Gary Niehues	Marilyn Boeding Paul Boeding	Katie Wassenberg Brenda Niehues	Allison Hermes	Deb Rethman
<u>7:00 AM</u>	Riley Bontrager *Doug Schmelzle	Jim Runnebaum Myra Runnebaum	Kim Bontrager Ranee Bontrager		
<u>9:00 AM</u>	Ashley Carlson *Josh Haverkamp	Lori Burdick Marian Rottinghaus	Claire Deters Ray Rottinghaus	K of C Choir	Terry Nordhus
<u>11:00 AM</u>	Shannon Holthaus *Gabriella Sudbeck	Lynda Cross Sharon Haverkamp	Kyle Rethman Collin Feldkamp	Katie Nordhus	Emily Strathman

**ROSARY LEADERS:**                      4:00 PM    Bob Niehues                      9:00 AM    Dennis Henry

High School CCD Note: HS CCD will meet this Wed. evening at 7:00 PM at the Seneca Theatre for the movie, "Alvin Law - How to Survive High School". The movie will start promptly at 7:00 and will last approximately one hour. Admission is free! Any questions, contact Brenda Rottinghaus (336-1266) or John Kohake (294-1255). It is a great movie, so urge your teen to go.

Altar Society Dues of \$5.00 may be dropped in the Sunday Collection. An envelope is provided for this in your January packet of envelopes.

Contribution Statements for 2015 will be mailed to any family who requests one. Please email the Parish Office at [sppsecretary@gmail.com](mailto:sppsecretary@gmail.com) or call the office at 336-2128 to request a statement.

CONTRIBUTIONS for week of 1/04/16 to 1/10/16  
Weekly Budget is \$15,000.

Church	Plate	\$ 2,009.00
	Envelope	\$ 5,174.00
	ACH/EFT	\$ 6,555.00
School	School support	\$ 4,885.00
	ACH/EFT	\$ 1,203.00
First Offering		\$ 55.00
Solemn of Mary		\$ 60.00
Candle Offer		\$ 122.00
TOTAL	Thank You!!	\$ 20,063.00

Start the New Year right by using Electronic Funds Transfer for your weekly/bi-monthly/monthly Church donation. Applications for EFT are on the table in the Narthex. Drop completed form in a sealed envelope in the Collection or bring to Parish Office.

#### UPCOMING PARISH EVENTS:

Sun Jan 31 - Altar Society Breakfast SPPS 7:00-1:00  
Sat Feb 20 - NFP Meeting, Church Basement 9:00 AM  
Wed Feb 10 - Ash Wednesday

#### SCHOOL NEWS:

Mon Jan 18 - No School - Martin Luther King Holiday  
Mon Jan 25 - BB @ Wetmore 4:00  
Jan 28, 30, Feb 1 & 4 - OTL BB Tournament/Nem Cen  
Jan 31 - Feb 5 - Catholic Schools Week

#### CCD NEWS:

Wed Jan 20 - Regular Classes for Grade School at 6:45. Monitors are Sara Rottinghaus and Jeffrey & Michele Spring. High School - Movie @ 7:00 PM at Seneca Theatre (see above note).



The Adoration Chapel needs adorers for Sat. 11-12 AM, and 12-1 PM; also Wed 3-4 AM. In your Mercy, give an hour to Jesus. Call Sue at 336-2297.

The 2016 Baileyville Benefit is for Jacob Schilling, 14 yr old son of Lisa (Noland) Schilling, Tim Sack, Jane Burdick, and Paul Kramer. It is scheduled for February 27<sup>th</sup> & 28<sup>th</sup> at Nemaha Central High School with the auction to start 6:00 pm on Sunday. Donations for the auction, chance stand, or wheel are very much welcome and appreciated! You may also bring in donations of food (i.e. pies, desserts, cinnamon rolls, cookies, etc) to the concession stand on Saturday morning to sell throughout the tournament. If you have any questions or would like to donate in any way (including volunteering to work a couple hours), please contact Kenny Schmitz at 336-6252 (email [kdschmitz@bbwi.net](mailto:kdschmitz@bbwi.net)) or Danny Broxterman at 334-3913.

Natural Family Planning - introduction to the Creighton Model System: The February Session will be on Saturday, February 20<sup>th</sup> at 9:00 AM. in the north basement of Sts Peter & Paul Church. This date is to accommodate college couples & those preparing for marriage in the coming year. To register, call Susie Lueger directly at 336-1934 or register online at <http://annunciationfrankfort.org/nfp>. Susie is providing the class free of charge for all who attend so married couples will benefit from this too.



#### Give the Gift of Life - Bern Community Blood

Drive will be held on Wed. Jan. 20<sup>th</sup> from 12 noon to 6:00 PM at the Bern Community Center. For an appointment, call Joyce at 785-336-3905 or go online at [www.redcrossblood.org](http://www.redcrossblood.org) (sponsor code 0091809)

#### AREA EVENTS:

\*\*Rediscover Catholicism, a book by Matthew Kelly, is being presented as a book study at St. Bede's Parish House, Kelly, every Sunday at 8:45 AM (before Sunday Mass at 10) & 7:00 PM. This extends to Sunday, March 13<sup>th</sup>. Come for one or all the sessions. Everybody welcome!

\*\*Corning (NM County #2) Fire Dept & EMS Benefit Breakfast, Sunday, Jan 24<sup>th</sup> from 7:00 to 1:00, Corning Community Center. Free will donation.

\*\*Touched by God's Mercy Retreat - Friday, Jan. 22 at 10:00 am - 3:00 pm. Come explore what the Year of Mercy can mean for you individually and as a Church. Sofia Spirituality Center. Call 913-360-6151.

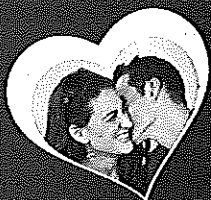
\*\*Attention all women: Save the Date!! January 23, Topeka Regional Catholic Women's Conference: Resolve, Renew, Rejoice: Real Womenhood. Christ the King Catholic Church, Topeka \$20.00 chg. Text or call Tonya at 785-221-8652 or [tanncampbell@gmail.com](mailto:tanncampbell@gmail.com).

\*\*Travel with Fr. Meinred Miller, O.S.B. to the Benedictine Monasteries of Italy during the Jubilee Year, May 16-May 25. Cost: \$3,799.00. To register, call 855-842-8801 or 508-340-9370.



Consider  
Remembering  
Your Parish in  
Your Will.  
For further information,  
please call the Parish Office.

**Rainbow**  
COMMUNICATIONS  
(800) 892-0163



**CatholicMatch**  
Kansas

[CatholicMatch.com/myKS](http://CatholicMatch.com/myKS)

**FARMERS UNION INSURANCE**

814 N. Street • Seneca, KS 66538

Farm • Auto • Crop • Commercial

**Jerry Nolte - Manager**

Ph. 785-336-2040

An App for Catholics.  
An App for your Parish.  
**ALL IN ONE!**

Download the  
**FREE APP TODAY**



**OneParish.com**



Daily Faith • Donations • Calendar • Parish Directory

Caring for our community for over 35 years.

**Nemaha County Home Health & Hospice**

A non-profit agency operated by Sabetha Community Hospital  
Serving all of Nemaha County • 785-284-2288 toll free: 866-686-2288

What if you are *Alone* and have an *Emergency*?

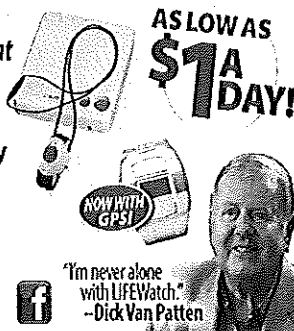
Just One Push of a Button can  
Protect You from Emergencies at  
Home and Away!

- ✓ Medical
- ✓ Fire
- ✓ Falls
- ✓ Burglary



You're never alone with Lifewatch!

**888.290.8871**  
[www.lifewatch-usa.com](http://www.lifewatch-usa.com)



**Hilltop Creations**  
LYNN & GAIL LIERZ  
Cabinets • Countertops  
Design • Sales  
785-336-3142  
785-294-0605 (Cell)

**SBS Insurance Agency**



**Allied Insurance**

a Nationwide® company  
On Your Side®

336-2821 [www.sbsins.com](http://www.sbsins.com)

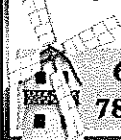
**WINDMILL INN STEAKHOUSE**

Sunday Lunch Buffet 11-1:30pm

Sunday Evening Menu 5-9pm

Tuesday-Saturday Evening

Open 5-9:30pm



603 N. 4th

785.336.3696



Christian Books & Gifts  
521 Main Street  
Seneca, KS 66538  
785-336-6311



Heritage Real Estate

[www.HeritageSuccess.com](http://www.HeritageSuccess.com)

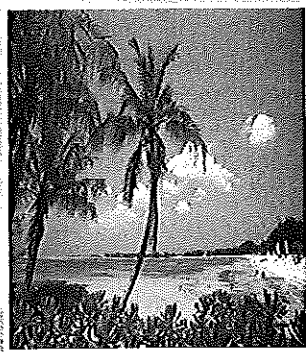
**Erik Ganstrom 336-1847**

**Kathy Ganstrom 336-1848**

**Lori Burdick 294-1681**

[ganstrom@heritagesuccess.com](mailto:ganstrom@heritagesuccess.com)

[burdick@heritagesuccess.com](mailto:burdick@heritagesuccess.com)



## Catholic Cruises and Tours

Come Sail Away on a 7-night Catholic Exotic Cruise.  
Prices begin at \$1045 per couple which includes all port fees  
and taxes. Daily Mass and Rosary offered. Deposit of  
only \$100 per person will reserve your cabin.

Space is limited. Thanks and God Bless,  
Brian or Sally, coordinators 860.399.1785



**[www.CatholicCruisesAndTours.com](http://www.CatholicCruisesAndTours.com)**



**Paluch PARTNERS**

A way for you to partner with service  
providers who support your parish through  
their sponsorship of the parish bulletin.

[www.PALUCHPARTNERS.com](http://www.PALUCHPARTNERS.com)

**SENECA  
SANITATION**

*Solid Waste Specialists*  
SERVING NORTHEAST  
KANSAS  
& SOUTHEAST NEBRASKA

313 S. 8th  
Seneca, KS 66538

785-336-2711  
402-859-4515



**LIFE CARE CENTER OF SENECA**

Quality Care Exceeding Your Expectations  
Rehabilitation, Skilled Nursing & Much More  
512 Community Dr., Seneca, Kansas 66538  
785-336-3528

PROTECTING SENIORS NATIONWIDE

RUSH

TANK

24/7 HELP



\$19.95/Mo. + 1 FREE MONTH!

• No long term contracts

• Price Guarantee

• American Made

**TOLL FREE: 1-877-801-8608**

30 Day Trial

HOLIDAY  
SPECIAL



794500 Ss Peter & Paul Church

[www.jspaluch.com](http://www.jspaluch.com)

**SURE CROP**

God supplies seed to the  
sower ... bread for food  
to eat ... the increase  
from seed sown ... and  
increases the harvest of  
your righteousness.

~ II Corinthians 9:10

Pre-Season Discounts  
Semi Load Discounts  
Early Delivery Credits  
Complete Soil Analysis

CALL ... 1-800-635-4743

Assure Your **SURE CROP** Yields

Sure Crop Fertilizers Seneca, KS 785-336-2121

For Ads: J.S. Paluch Co., Inc. 1-800-945-6629